



**WESTON DRIVE**  
OTLEY, LS21 2EL

**£325,000**  
FREEHOLD

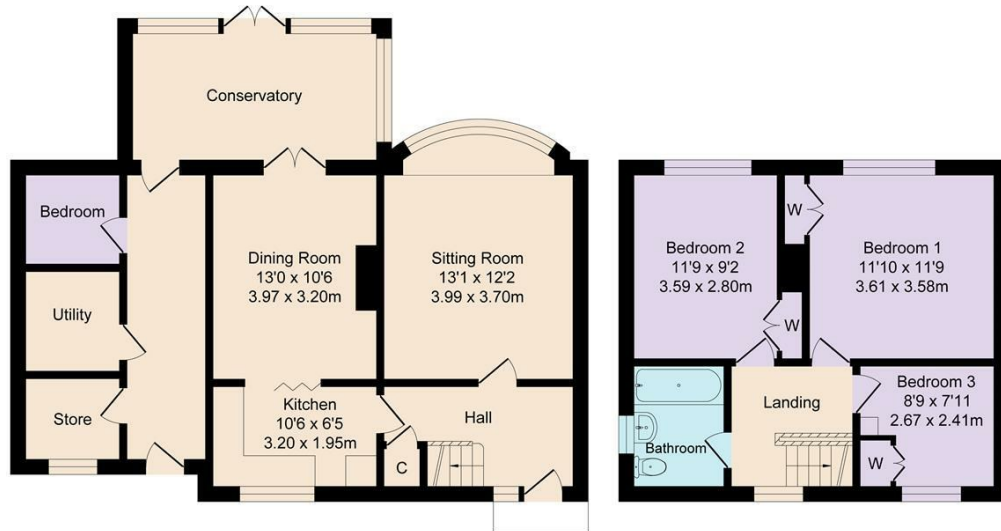
Situated in a popular residential area of Otley, this well-presented four-bedroom home offers flexible accommodation across two floors, ideal for families or those seeking versatile living space close to local amenities and transport links.

**MONROE**

SELLERS OF THE FINEST HOMES

# Weston Drive, Otley

Total Approx. Floor Area 1306 Sq.ft. (121.3 Sq.M.)



**Ground Floor**  
Approx. Floor Area 844 Sq.Ft (78.4 Sq.M.)

**First Floor**  
Approx. Floor Area 462 Sq.Ft (42.9 Sq.M.)

**SKETCH PLAN FOR ILLUSTRATIVE PURPOSES ONLY**

All measurements walls, doors, windows, fittings and appliances, their sizes and locations, are approximate only. They cannot be regarded as being a representation by the seller, nor their agent.

Produced by Potterplans Ltd. 2026



| Energy Efficiency Rating                    |  | Current                 | Potential |
|---|--|-------------------------|-----------|
| Very energy efficient - lower running costs |  |                         |           |
| (92 plus) A                                 |  |                         |           |
| (81-91) B                                   |  |                         | 86        |
| (69-80) C                                   |  | 73                      |           |
| (55-68) D                                   |  |                         |           |
| (39-54) E                                   |  |                         |           |
| (21-38) F                                   |  |                         |           |
| (1-20) G                                    |  |                         |           |
| Not energy efficient - higher running costs |  |                         |           |
| <b>England &amp; Wales</b>                  |  | EU Directive 2002/91/EC |           |

Agents Note: Whilst every care has been taken to prepare these particulars, they are for guidance purposes only. All measurements are approximate and are for general guidance purposes only and whilst every care has been taken to ensure their accuracy, they should not be relied upon and potential buyers/tenants are advised to recheck the measurements

Guiseley Sales  
3a Oxford Road  
Guiseley  
Leeds  
LS20 9AS

james@monroestateagents.com  
monroestateagents.com

MONROE

SELLERS OF THE FINEST HOMES